

6% - 8% AIR ENTRAINED
 35 MPa (5000 psi) @ 28 DAYS
 AS PER CSA A23.4-09 STANDARD

GENERAL NOTES:

A PUMP STATION IS REQUIRED WHEN A SEPTIC SYSTEM IS UNABLE TO FUNCTION BY GRAVITY.

FROM 8.6.1.3. (3) OF THE O.B.C. 2006, WHERE 2 OR MORE PUMPS ARE EMPLOYED WITHIN A DOSING TANK, THE PUMPS SHALL BE DESIGNED SUCH THAT THE PUMPS ALTERNATE DOSING, AND DOSING SHALL CONTINUE IN THE EVENT THAT ONE OF THE PUMP FAILS.

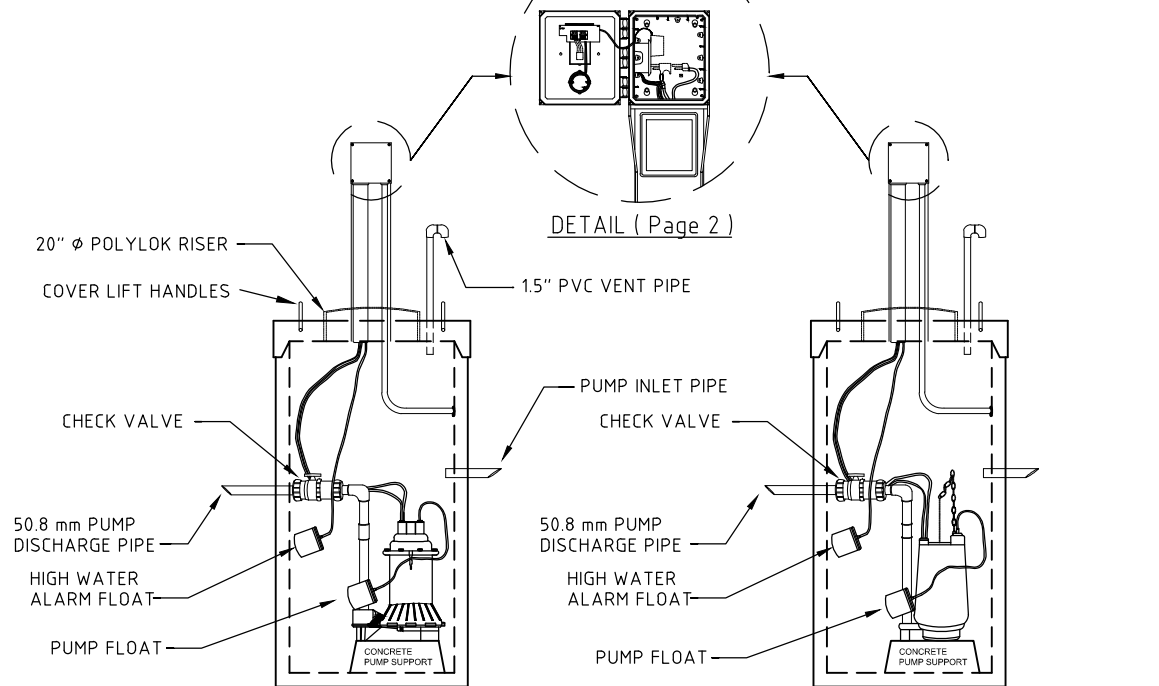
FROM 8.6.1.3. (4) OF THE O.B.C. 2006, WHERE A PUMP OR SIPHON IS REQUIRED, THE PUMP OR SIPHON SHALL BE DESIGNED TO DISCHARGE A DOSE OF AT LEAST 75% OF THE INTERNAL VOLUME OF THE DISTRIBUTION PIPE WITHIN A TIME PERIOD NOT EXCEEDING 15 MINUTES.

A PUMP STATION SHALL HAVE A WORKING VOLUME OF A THIRD OF THE DAILY FLOW OF THE SEPTIC SYSTEM IT IS DESIGNED FOR.

PUMP STATION ARE AVAILABLE IN MULTIPLE SIZES, AND MULTIPLE PUMP SIZES ALSO AVAILABLE. DUAL PUMP STATION ALSO AVAILABLE, SEE LIST BELOW, VOLUME INDICATED IS MAXIMUM WORKING VOLUME:

- 175 GAL / 800 LITERS : 3 FEET ϕ - 4 FEET WELL TILE
- 250 GAL / 1135 LITERS : 3 FEET ϕ - 6 FEET WELL TILE
- 450 GAL / 2045 LITERS : 4 FEET ϕ - 6 FEET WELL TILE
- DUAL - 760 GAL / 3450 LITERS : NORMAL 800 GAL / 3630 L TANK
- DUAL - 1175 GAL / 5340 LITERS : NORMAL 1210 GAL / 5509 L TANK

ALARMS, ELECTRICAL BOXES AND CHECK VALVES MAY DIFFERS FROM ONE PUMP STATION SYSTEMS TO ANOTHER. SIMPLEX AND DUPLEX TIME DOSING CONTROL PANEL AVAILABLE.



SRM 4 0.40 HP PUMP SYSTEM

MRG 20 2.0 HP GRINDER PUMP SYSTEM

BOTH PUMP SHOWN ARE 250 GAL / 1135 L PUMP STATIONS, NOT TO SCALE

SIDE VIEW

16525 SIXTH RD, MOOSE CREEK, ON
 KOC 1W0
 PHONE : (613)-538-2381
 FAX : (613)-538-4870

MOOSE CREEK CEMENT PRODUCTS (2006) LIMITED
 PUMP STATION SIDE VIEW (Page 1 / 2)

SCALE

NOT TO SCALE

DATE

JULY 2011

