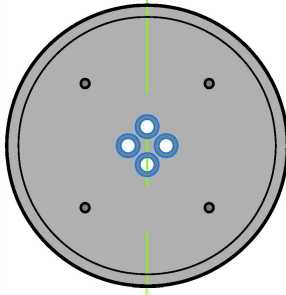
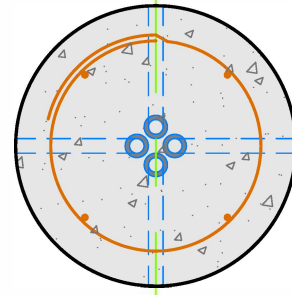


TOP VIEW



HORIZONTAL SECTION



ANCHOR RODS

PVC ELEC CONDUITS

STEEL REINFORCING

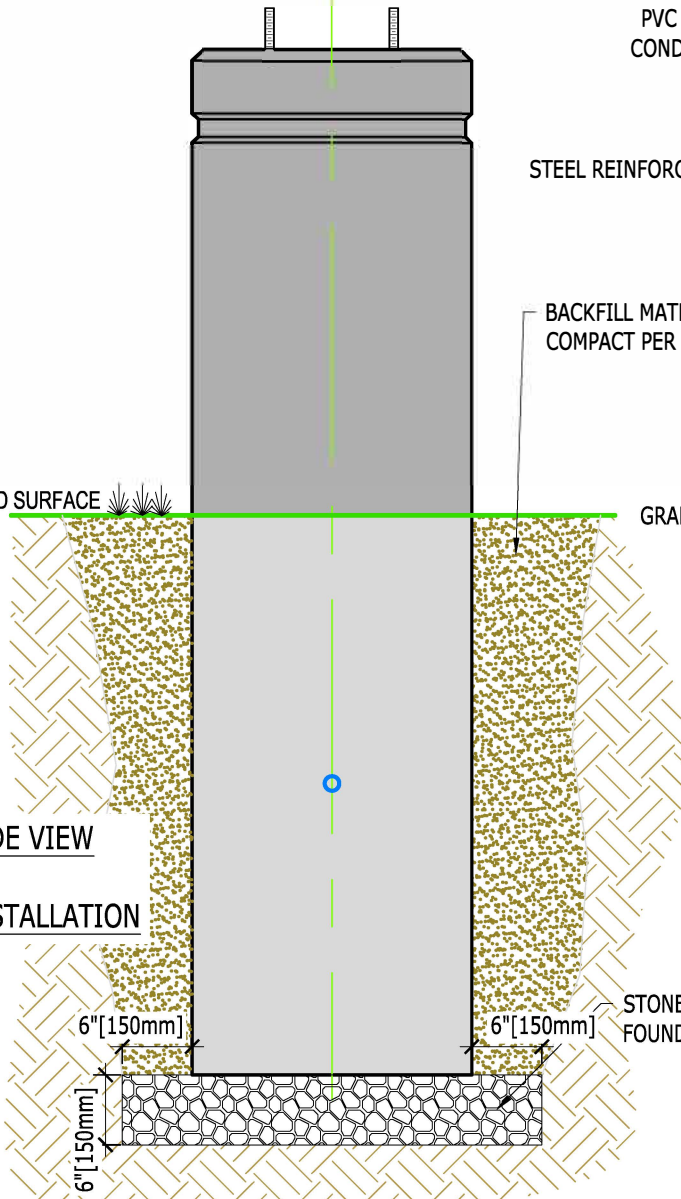
BACKFILL MATERIAL, COMPACT PER SPECS.

FINISHED TEXTURE = 3'-4" ± 1/2" [1016 ± 13 mm]

GROUND SURFACE

GRADE LINE

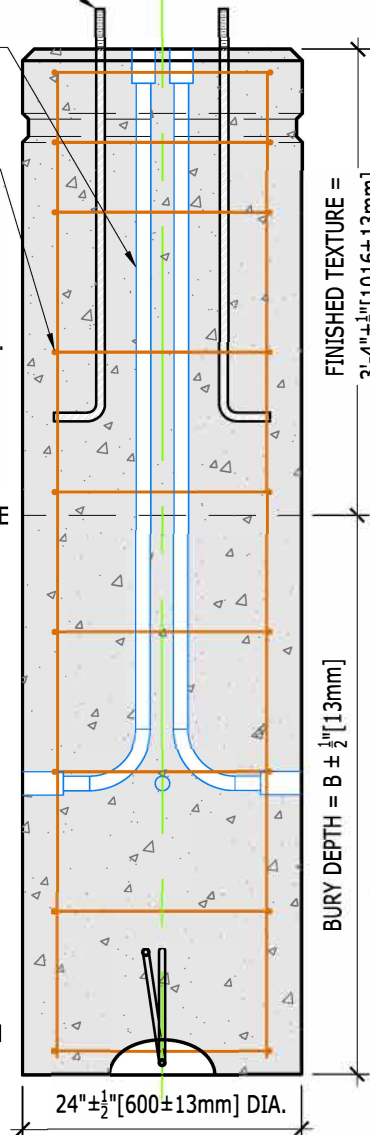
SIDE VIEW  
-  
INSTALLATION



STONE FOUNDATION

BURY DEPTH = B ± 1/2" [13 mm]

VERTICAL SECTION



24" ± 1/2" [600 ± 13 mm] DIA.

0" 3" 6" 9" 12"  
SCALE

|           |              |
|-----------|--------------|
| DRAWN BY: | BWL          |
| SCALE:    | 3/4" = 1'-0" |
| DATE:     | 8SEP2014     |
| SHEET:    | 1 of 1       |

|        |  |
|--------|--|
| TITLE: | Round Smooth/Rusticated Pole Base Available in 18-, 24-, and 30-inch |
| FILE:  | POLE BASE DRAWINGS - 090814.dwg                                      |

**pole base**<sup>TM</sup>  
www.polebase.com