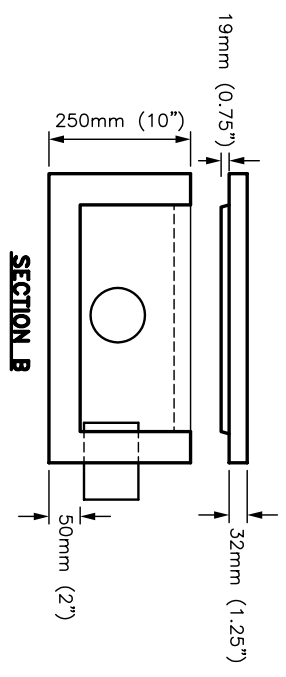
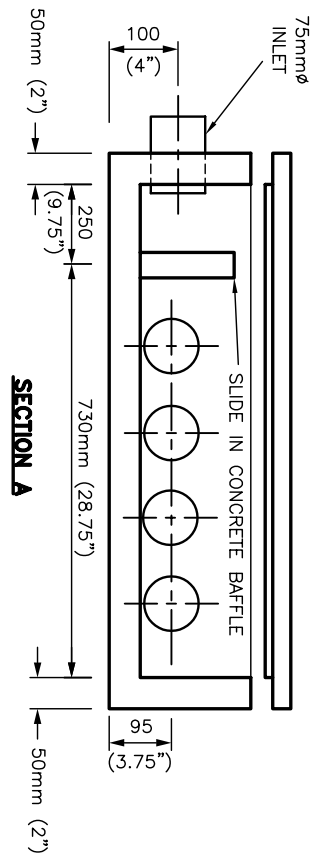
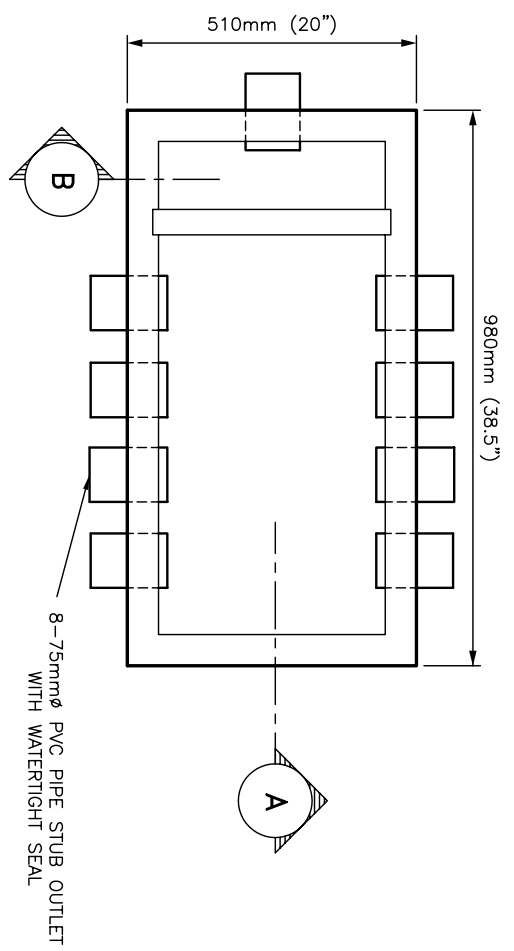
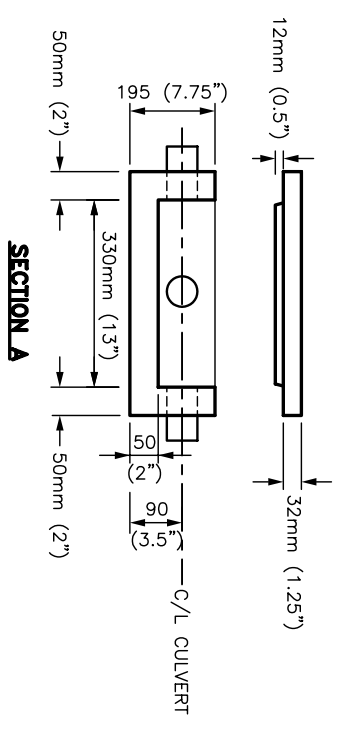
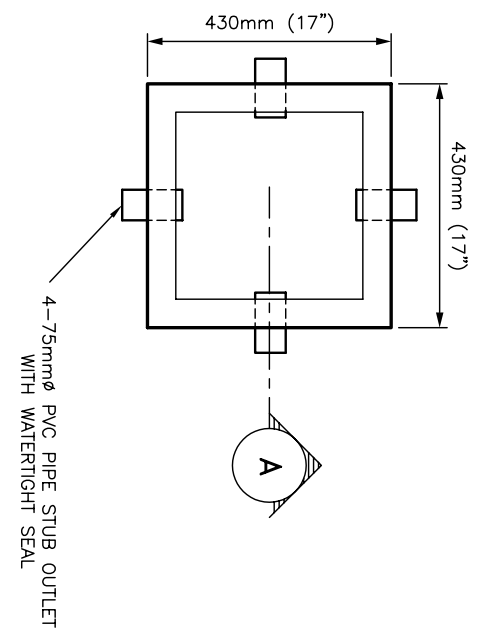


LARGE DISTRIBUTION BOX



CONCRETE: 35 MPa WITH 5% TO 8%
AIR ENTRAINMENT
WEIGHT: 200 kg (440 lbs)

SMALL DISTRIBUTION BOX



CONCRETE: 35 MPa WITH 5% TO 8%
AIR ENTRAINMENT
WEIGHT: 50 kg (110 lbs)

Product No.:

MOOSE CREEK CEMENT PRODUCTS LIMITED
DISTRIBUTION BOXES

Scale: Not to scale
Date: JAN, 2004