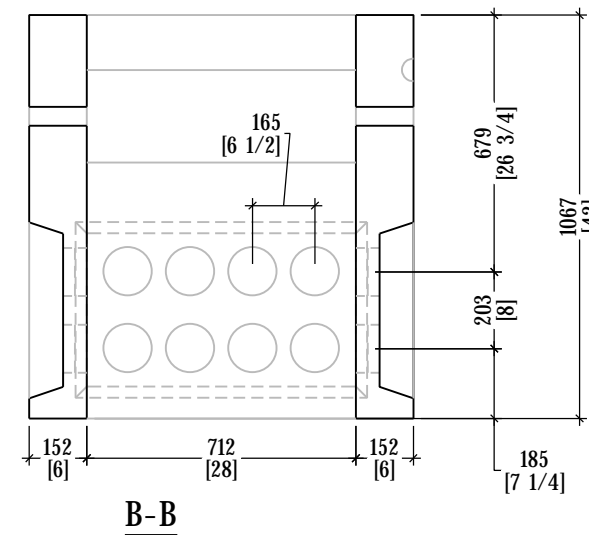
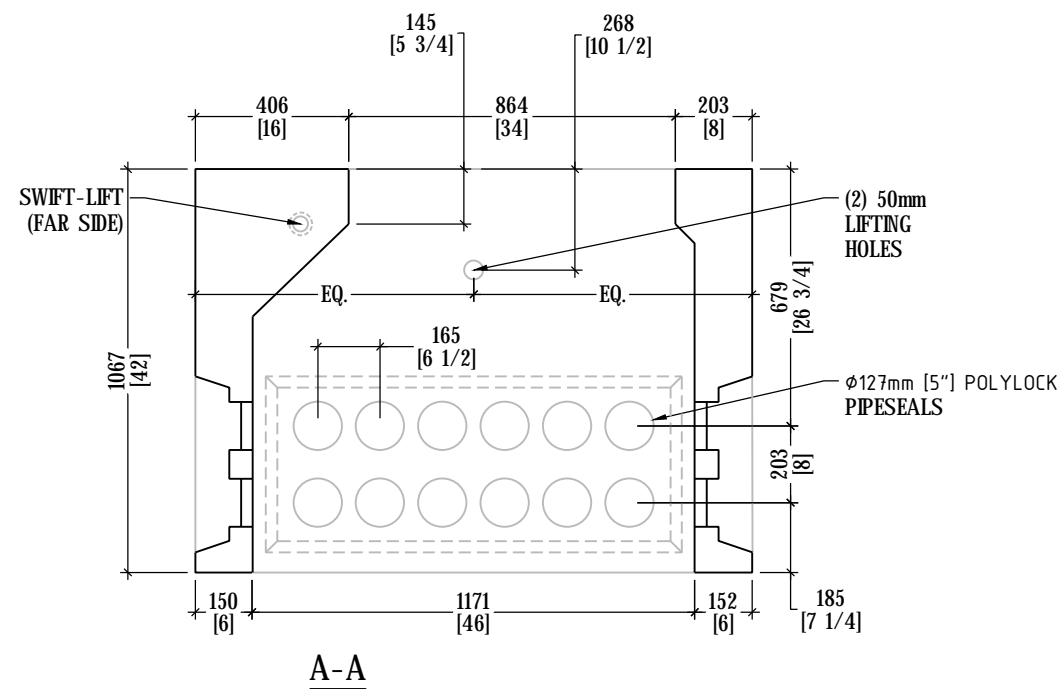
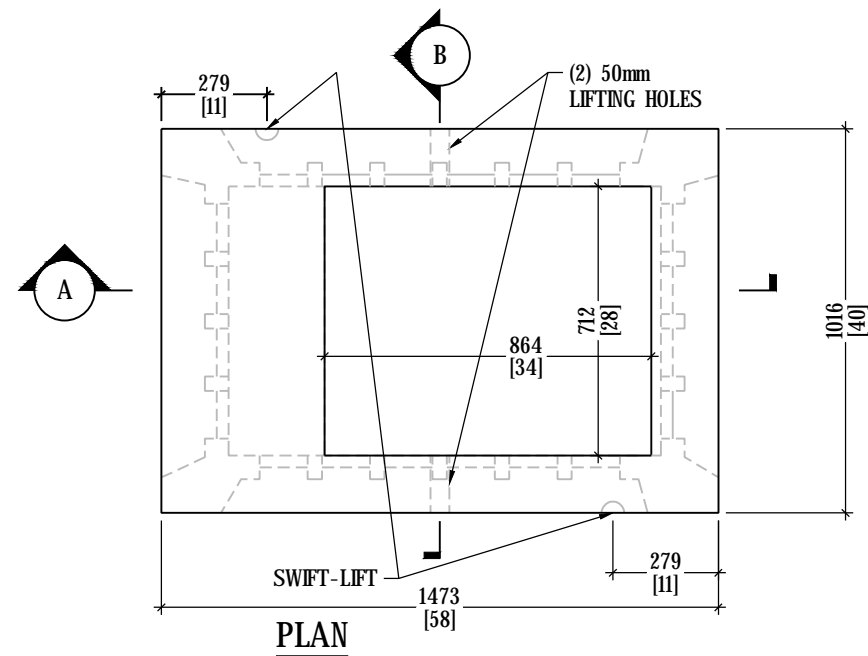


SPECIFIED DESIGN LOADS		
UNIFORM LATERAL LOAD ON EXTERIOR WALLS	25kN/m <sup>2</sup>	DUE TO SATURATED BACKFILL AND SURCHARGE
UNIFORM LOAD ON TOP SLAB/COVER	50kN/m <sup>2</sup>	ASSUMING MAX TRANSFORMER WEIGHT OF 73.87KN (7530KG)
POINT LOAD ON TOP SLAB/COVER	70kn	DUE TO CSA S6-14, CL-625 TRUCK, SINGLE WHEEL



mm [inches], SCALE=1:20, UNLESS NOTED OTHERWISE



16525 SIXTH RD.  
MOOSE CREEK, ON  
PHONE:(613)538-2381  
FAX:(613)538-4870

REFERENCE DESIGN: HYDRO ONE DU-09-101 & DU-09-201

CONCRETE: CAN/CSA G23.1/23.4-05  
35MPa AT 28 DAYS, EXPOSURE CLASS:C1, AIR: 6-8%  
REINFORCEMENT: CSA G30.18-400W

**BASE**

- (12) 127MM [5"] Ø POLYLOK PIPESEAL OPENINGS, PER SIDE (48 TOTAL)
- (1) 16MM [0.625"] INSERTS, INTERIOR, GROUNDING

**PAD**

- (2) 16MM [0.625"] INSERTS
- NO LOADS ON KNOCKOUTS

DESCRIPTION  
**SINGLE PHASE TRANSFORMER BASE**

ITEM CODE	REV	DATE
0202	0	28-03-2019

OUTSIDE DIMENSIONS: **1016x1474 x1067** TOTAL WEIGHT: **1,700KG/5,070LBS**